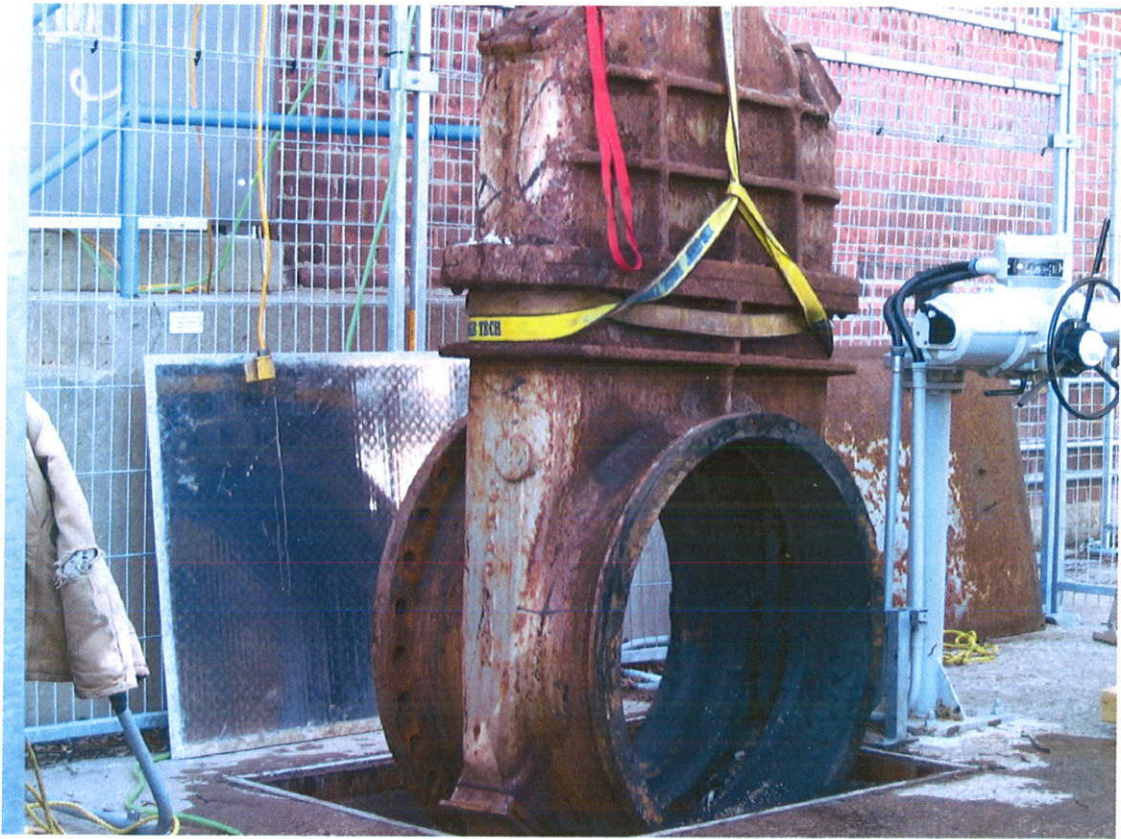


Ashbridges Bay STP Toronto



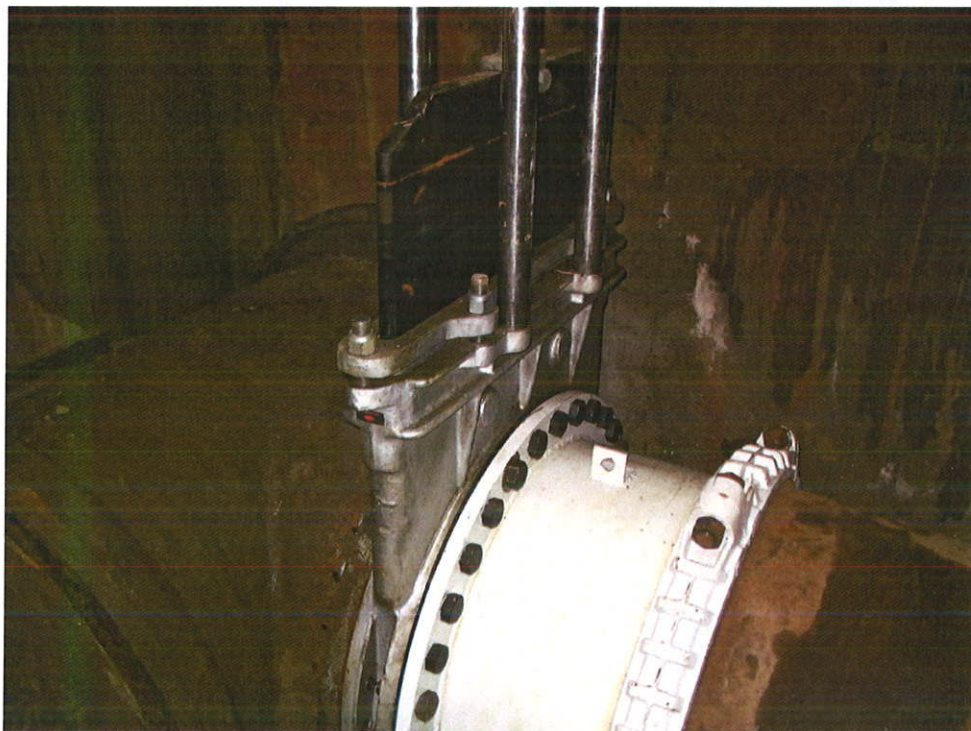
Initial removal of Chapman 36" cast Iron gate valve



This unit is not fit for rebuilding. A stainless steel knife gate supplied by **Syntec Equipment** will be installed complete with a new spool piece.



The new spool section has been built with one flange end and the other to suit an existing Victaulic coupling.



The new Trueline cast stainless steel knife gate supplied by **Syntec Process Equipment** and adapter spool are shown as installed in June 2007 at the main pumping station, Ashbridges